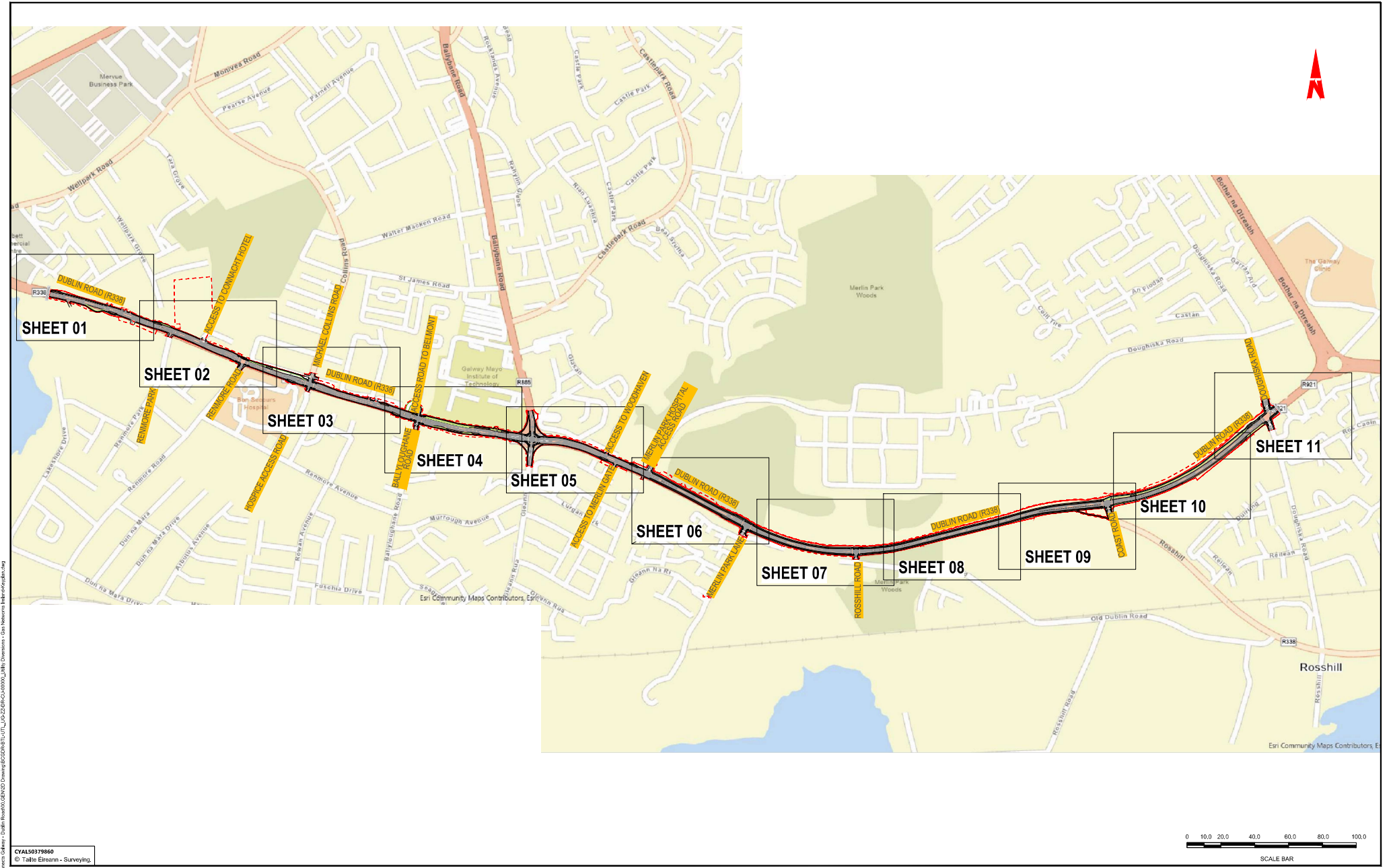


GNI Asset Alterations





R:\12 Projects\2017 - Bus Connects\Galway - Dublin Road\GEN00 Drawing\B004-R1-UTL_UG-ZZ-DR-CU-0000_Utility Diversion - Gas Network Inter-diversion.dwg

CYAL50379860
© Tallie Eireann - Surveying.

Notes:
DO NOT SCALE. Use figured dimensions only.
All levels are referred to Ordnance Survey Datum, Mean High Water.
This drawing is the property of Barry Transportation. It is a confidential document and must not be copied, used, or its contents divulged without prior written consent. This document should not be relied on or used in circumstances other than those for which it was originally prepared. Barry Transportation accepts no responsibility for the document to any other party other than the party by whom it was commissioned.

Rev.	Date	Drawn	Description	Chkd	Appr
01	06/12/24	GR	ISSUE FOR PLANNING	SOI	JH

Project Title: BUSCONNECTS GALWAY : DUBLIN ROAD

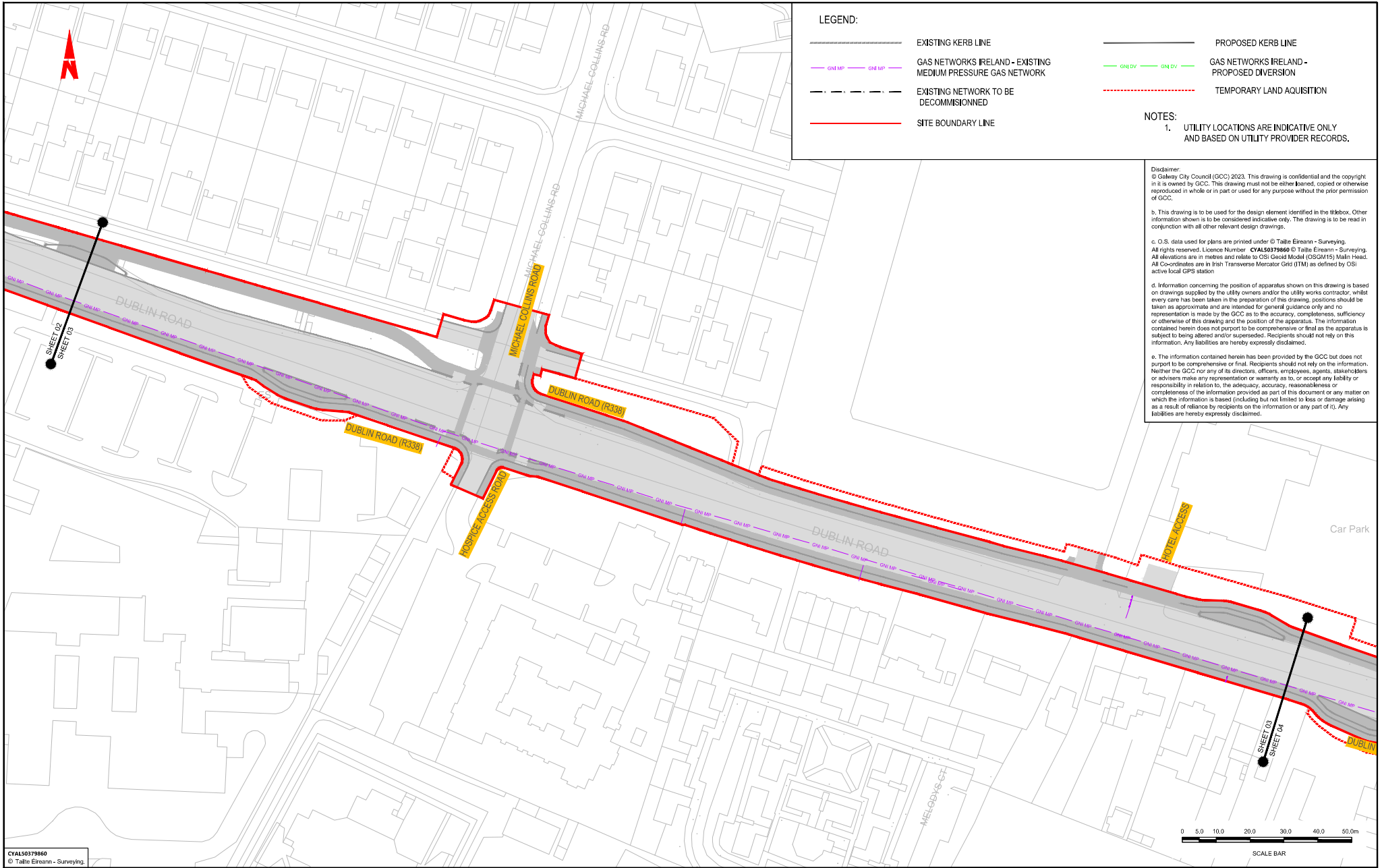
Drawing Title: UTILITY DIVERSION - GAS NETWORKS (IRELAND) KEY PLAN SHEET 01 OF 01

Designed: GW	Drawing No. BCGDR-8TL-UTL_UG-ZZ-DR-CU-00000
Drawn: GW	Scale at A1: 1:5000
Approved: JH	Date: OCTOBER 2024
Reviewed: JH	

Status: A1

Rev: C01

File Name: R:\22 Projects\2007 - BusConnects Galway - Dublin Road\GEN00 Drawing\GEN00\B1-UTL_UIG-22-ZR-CU-0001_Utility Diversion - Gas Networks Ireland.dwg



Tionscadal Éireann
Project Ireland
2040

BUS CONNECTS GALWAY
SUSTAINABLE TRANSPORT FOR A BETTER CITY

NTA
Udarás Náisiúnta Iompair
National Transport Authority

BARRY
TRANSPORTATION

egis

Notes:

DO NOT SCALE, use figured dimensions only.
All levels are related to Ordnance Survey datum, Mean Head.

This drawing is the property of Barry Transportation. It is a confidential document and must not be copied, used, or its contents divulged without prior written consent. This document should not be relied on or used in circumstances other than those for which it was originally prepared. Barry Transportation accepts no responsibility for this document to any other party other than the party by whom it was commissioned.

Rev.	Date	Drawn	Description	Chk'd	App'd
001	06/03/24	QWP	BLUE FOR PLANNING	301	UN

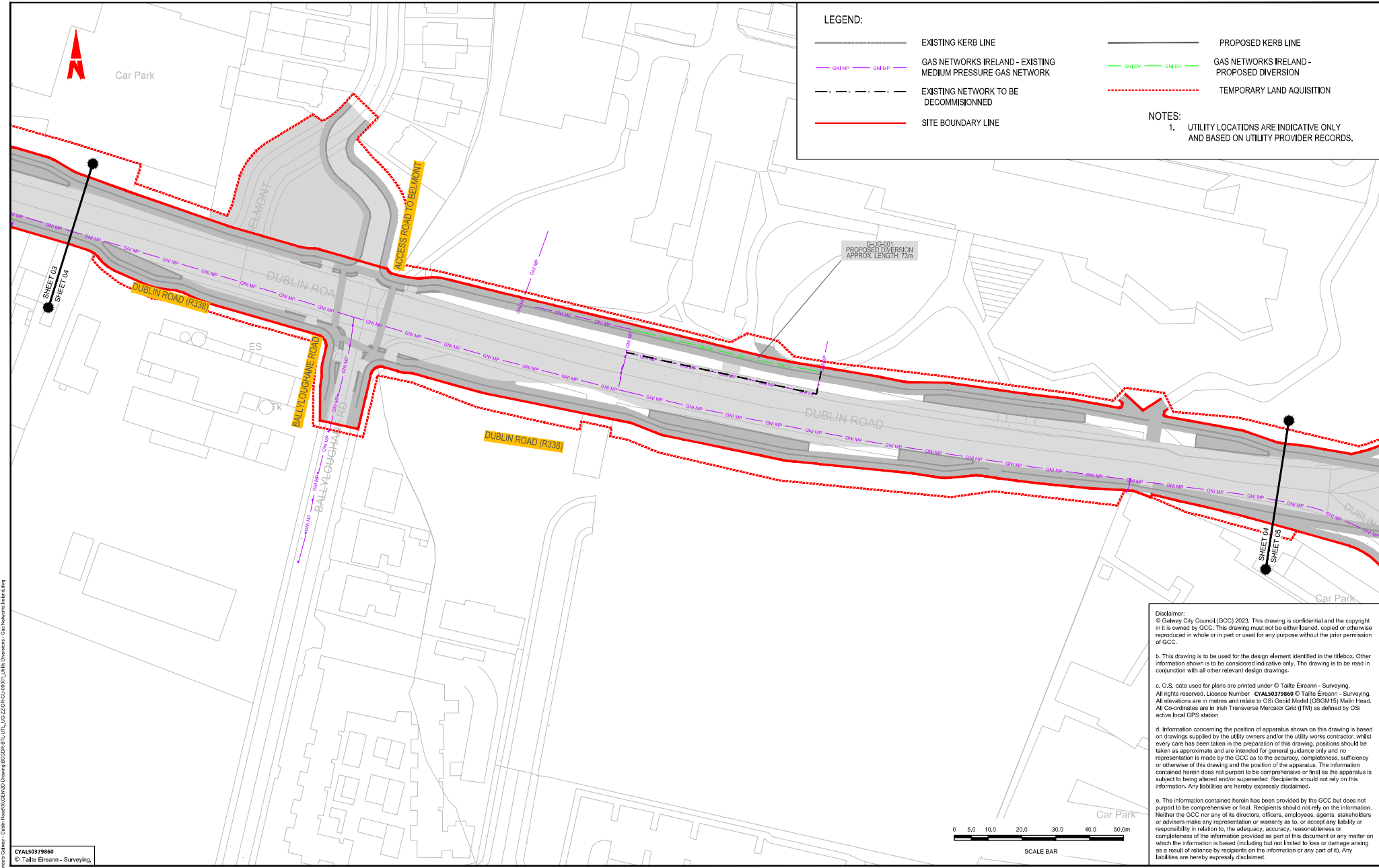
Project Title: **BUSCONNECTS GALWAY - DUBLIN ROAD**

Drawing Title: **UTILITY DIVERSION - GAS NETWORKS IRELAND**
SHEET 3 OF 11

Designed: WOT	Drawing No. BCQDR-BT1-UTL_UIG-22-ZR-CU-00003	Rev: C01
Drawn: AC	Scale at A1: 1:500	
Approved: SOL	Date: OCT 2023	
Reviewed: JN		

Status: **A1**

File Name: R:\02 Projects\2007 - BusConnects Galway - Dublin Road\GEN00 Drawing\GEN04-BTL-UT_LUG-22-DR-CU-00001_Utility Diversion - Gas Networks Ireland.dwg



LEGEND:

- EXISTING KERB LINE
- GAS NETWORKS IRELAND - EXISTING MEDIUM PRESSURE GAS NETWORK
- EXISTING NETWORK TO BE DECOMMISSIONED
- SITE BOUNDARY LINE
- PROPOSED KERB LINE
- GAS NETWORKS IRELAND - PROPOSED DIVERSION
- TEMPORARY LAND ACQUISITION

NOTES:

- UTILITY LOCATIONS ARE INDICATIVE ONLY AND BASED ON UTILITY PROVIDER RECORDS.

Disclaimer:
 © Galway City Council (GCC) 2023. This drawing is confidential and the copyright in it is owned by GCC. This drawing must not be either loaned, copied or otherwise reproduced in whole or in part or used for any purpose without the prior permission of GCC.

b. This drawing is to be used for the design element identified in the titlebox. Other information shown is to be considered indicative only. The drawing is to be read in conjunction with all other relevant design drawings.

c. O.S. data used for plans are printed under © Tallie Eireann - Surveying. All rights reserved. Licence Number: CYAL5037986 © Tallie Eireann - Surveying. All elevations are in metres and relate to OSI Geoid Model (OSGM15) Mean Head. All Co-ordinates are in Irish Transverse Mercator Grid (ITM) as defined by OSI active local GPS station

d. Information concerning the position of apparatus shown on this drawing is based on drawings supplied by the utility owners and/or the utility works contractor, whilst every care has been taken in the preparation of this drawing, positions should be taken as approximate and are intended for general guidance only and no representation is made by the GCC as to the accuracy, completeness, sufficiency or otherwise of this drawing and the position of the apparatus. The information contained herein does not purport to be comprehensive or final as the apparatus is subject to being altered and/or superseded. Recipients should not rely on this information. Any liabilities are hereby expressly disclaimed.

e. The information contained herein has been provided by the GCC but does not purport to be comprehensive or final. Recipients should not rely on the information. Neither the GCC nor any of its directors, officers, employees, agents, stakeholders or advisers make any representation or warranty as to, or accept any liability or responsibility in relation to, the adequacy, accuracy, reasonableness or completeness of the information provided as part of this document or any matter on which the information is based (including but not limited to loss or damage arising as a result of reliance by recipients on the information or any part of it). Any liabilities are hereby expressly disclaimed.

CYAL50379860
© Tallie Eireann - Surveying.

Notes:

DO NOT SCALE, use figured dimensions only.
 All levels are related to Ordnance Survey Datum, Mean Head.
 This drawing is the property of Barry Transportation. It is a confidential document and must not be copied, used, or its contents divulged without prior written consent. This document should not be relied on or used in circumstances other than those for which it was originally prepared. Barry Transportation accepts no responsibility for the document to any other party other than the party by whom it was commissioned.

Rev.	Date	Drawn	Description	Chk'd	Appr'd
001	06/03/24	QIP	BIDULE FOR PLANNING	SOI	JA

Project Title: BUSCONNECTS GALWAY - DUBLIN ROAD

Drawing Title: UTILITY DIVERSION - GAS NETWORKS IRELAND
SHEET 4 OF 11

Designed: WOT
Drawn: AC
Approved: SOL
Reviewed: JN

Drawing No.: BCGDR-8TL-UTL_LUG-22-DR-CU-00004

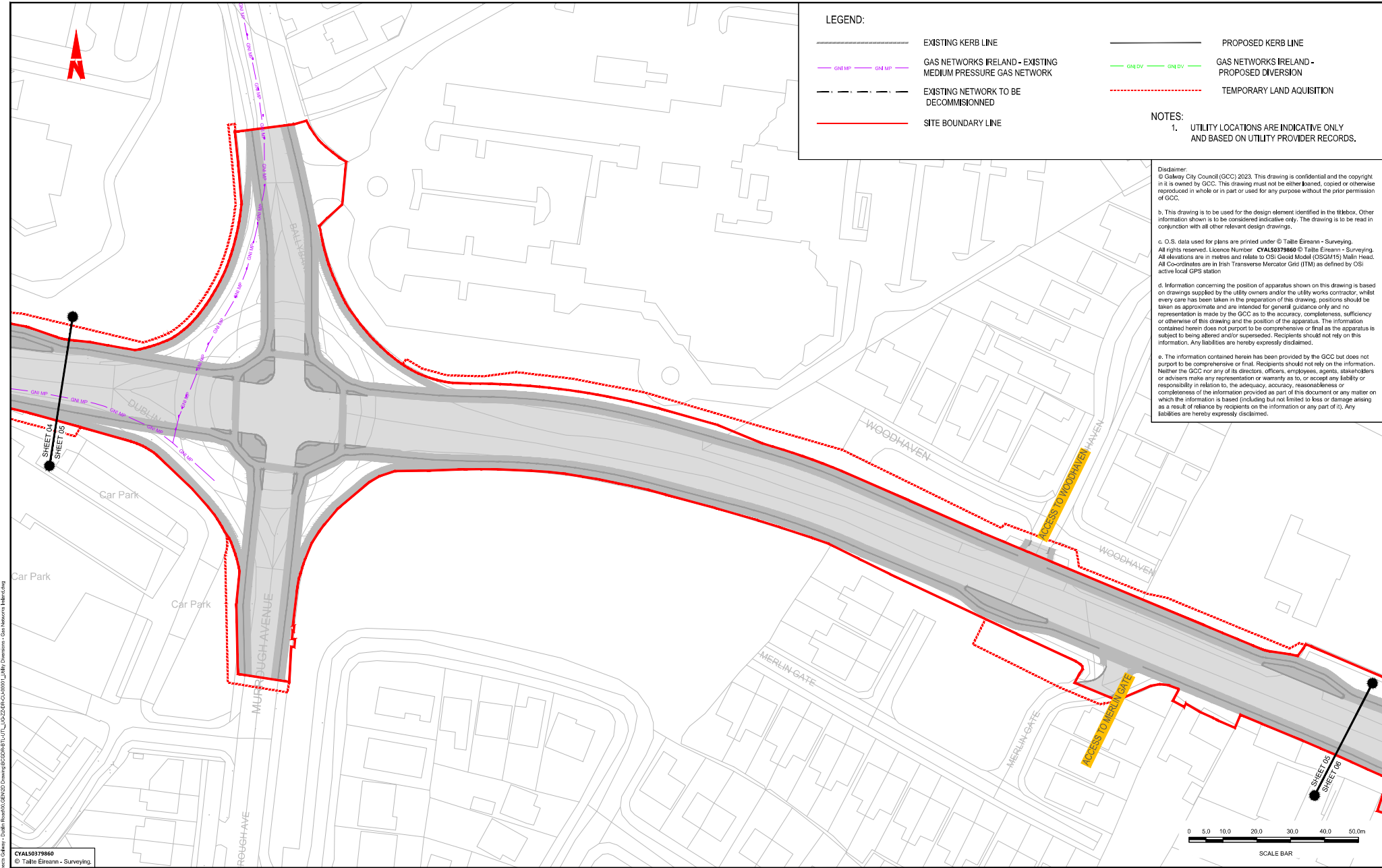
Scale at A1: 1:500

Date: OCT 2023

Status: A1

Rev: C01

File Name: R:\22 Projects\2007 - Bus Connects Galway - Dublin Road\GEN00 Drawing\B004R-1-UT_LUG-22-BR-CU-0001-Utility Divisions - Gas Networks Ireland.dwg



LEGEND:

EXISTING KERB LINE

GAS NETWORKS IRELAND - EXISTING MEDIUM PRESSURE GAS NETWORK

GAS NETWORKS IRELAND - PROPOSED DIVERSIONPROPOSED KERB LINE

NOTES:

1. UTILITY LOCATIONS ARE INDICATIVE ONLY AND BASED ON UTILITY PROVIDER RECORDS.

Disclaimer:
© Galway City Council (GCC) 2023. This drawing is confidential and the copyright in it is owned by GCC. This drawing must not be either loaned, copied or otherwise reproduced in whole or in part or used for any purpose without the prior permission of GCC.

b. This drawing is to be used for the design element identified in the titlebox. Other information shown is to be considered indicative only. The drawing is to be read in conjunction with all other relevant design drawings.

c. O.S. data used for plans are printed under © Taithe Eireann - Surveying. All rights reserved. Licence Number **CYAL50379860** © Taithe Eireann - Surveying. All elevations are in metres and relate to OSI Geoid Model (OSGM15) Mean Head. All Co-ordinates are in Irish Transverse Mercator Grid (ITM) as defined by OSI active local GPS station.

d. Information concerning the position of apparatus shown on this drawing is based on drawings supplied by the utility owners and/or the utility works contractor, whilst every care has been taken in the preparation of this drawing, positions should be taken as approximate and are intended for general guidance only and no representation is made by the GCC as to the accuracy, completeness, sufficiency or otherwise of this drawing and the position of the apparatus. The information contained herein does not purport to be comprehensive or final as the apparatus is subject to being altered and/or superseded. Recipients should not rely on this information. Any liabilities are hereby expressly disclaimed.

e. The information contained herein has been provided by the GCC but does not purport to be comprehensive or final. Recipients should not rely on the information. Neither the GCC nor any of its directors, officers, employees, agents, stakeholders or advisers make any representation or warranty as to, or accept any liability or responsibility in relation to, the adequacy, accuracy, reasonableness or completeness of the information provided as part of this document or any matter on which the information is based (including but not limited to loss or damage arising as a result of reliance by recipients on the information or any part of it). Any liabilities are hereby expressly disclaimed.

Notes:

DO NOT SCALE, use figured dimensions only.

All levels are referred to Ordnance Survey Datum, Mean Head.

This drawing is the property of Barry Transportation. It is a confidential document and must not be copied, used, or its contents divulged without prior written consent. This document should not be relied on or used in circumstances other than those for which it was originally prepared. Barry Transportation accepts no responsibility for this document to any other party other than the party by whom it was commissioned.

Rev.	Date	Drawn	Description	Chk'd	App'd
001	06/03/24	GWP	BLUE FOR PLANNING	BDL	JA

Project Title: BUSCONNECTS GALWAY - DUBLIN ROAD

Drawing Title: UTILITY DIVERSION - GAS NETWORKS IRELAND SHEET 5 OF 11

Designed: WOT

Drawn: AC

Approved: SOL

Reviewed: JN

Drawing No.: BCGDR-8T1-UT_LUG-22-BR-CU-00005

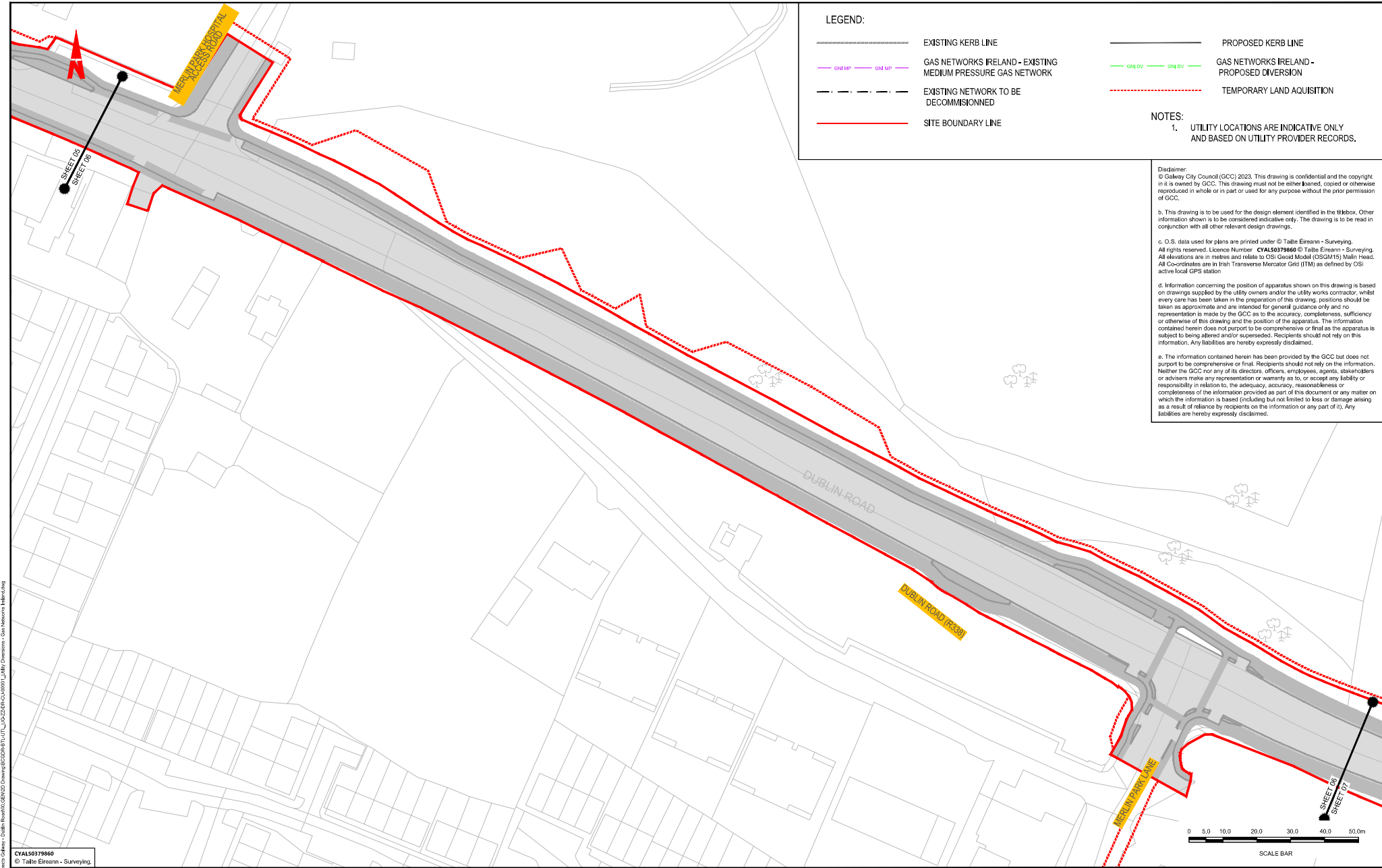
Scale at A1: 1:500

Date: OCT 2023

Status: A1

Rev: C01

File Name: R:\22 Projects\207 - Bus Connects Galway - Dublin Road\GEN00 Drawing\B0004-R1-UT_LUG-22-BR-CU-0001-Utility Diversion - Gas Networks Ireland.dwg



LEGEND:

EXISTING KERB LINE

GAS NETWORKS IRELAND - EXISTING MEDIUM PRESSURE GAS NETWORK

EXISTING NETWORK TO BE DECOMMISSIONED

SITE BOUNDARY LINE

PROPOSED KERB LINE

GAS NETWORKS IRELAND - PROPOSED DIVERSION

TEMPORARY LAND ACQUISITION

NOTES:
1. UTILITY LOCATIONS ARE INDICATIVE ONLY AND BASED ON UTILITY PROVIDER RECORDS.

Disclaimer:
© Galway City Council (GCC) 2023. This drawing is confidential and the copyright in it is owned by GCC. This drawing must not be either loaned, copied or otherwise reproduced in whole or in part or used for any purpose without the prior permission of GCC.

b. This drawing is to be used for the design element identified in the titlebox. Other information shown is to be considered indicative only. The drawing is to be read in conjunction with all other relevant design drawings.

c. O.S. data used for plans are printed under © Taithe Eireann - Surveying. All rights reserved. Licence Number **CYAL50379860** © Taithe Eireann - Surveying. All elevations are in metres and relate to OSI Geoid Model (OSGM15) Mean Head. All Co-ordinates are in Irish Transverse Mercator Grid (ITM) as defined by OSI active local GPS station.

d. Information concerning the position of apparatus shown on this drawing is based on drawings supplied by the utility owners and/or the utility works contractor, whilst every care has been taken in the preparation of this drawing, positions should be taken as approximate and are intended for general guidance only and no representation is made by the GCC as to the accuracy, completeness, sufficiency or otherwise of this drawing and the position of the apparatus. The information contained herein does not purport to be comprehensive or final as the apparatus is subject to being altered and/or superseded. Recipients should not rely on this information. Any liabilities are hereby expressly disclaimed.

e. The information contained herein has been provided by the GCC but does not purport to be comprehensive or final. Recipients should not rely on the information. Neither the GCC nor any of its directors, officers, employees, agents, stakeholders or advisers make any representation or warranty as to, or accept any liability or responsibility in relation to, the adequacy, accuracy, reasonableness or completeness of the information provided as part of this document or any matter on which the information is based (including but not limited to loss or damage arising as a result of reliance by recipients on the information or any part of it). Any liabilities are hereby expressly disclaimed.

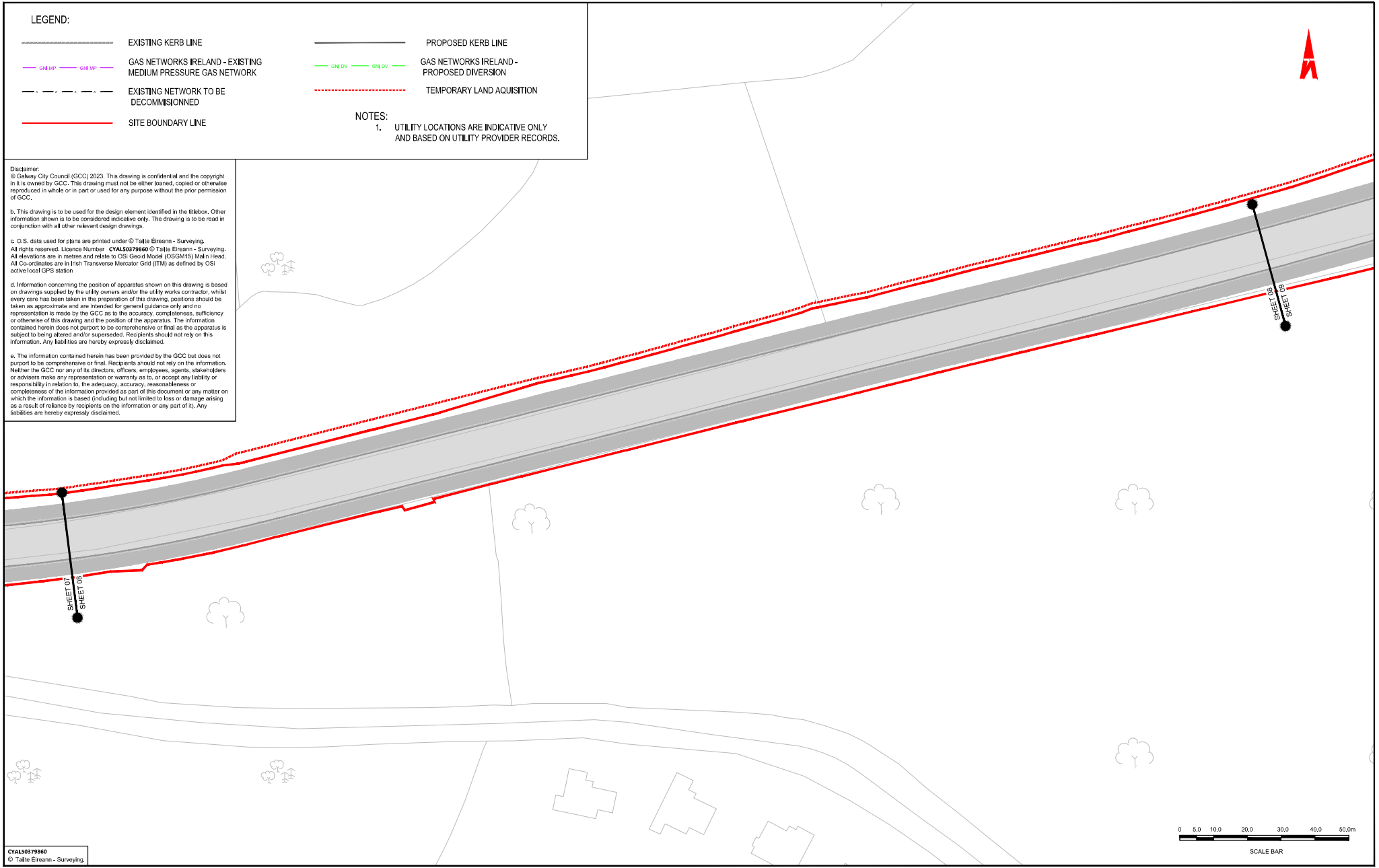
CYAL50379860
© Taithe Eireann - Surveying.

Notes:
DO NOT SCALE, use figured dimensions only.
All levels are related to Ordnance Survey Datum, Mean Head.
This drawing is the property of Barry Transportation. It is a confidential document and must not be copied, used, or its contents divulged without prior written consent. This document should not be relied on or used in circumstances other than those for which it was originally prepared. Barry Transportation accepts no responsibility for this document to any other party other than the party by whom it was commissioned.

Rev.	Date	Drawn	Description	Chk'd	App'd
001	06/03/24	GWP	BLUE FOR PLANNING	BDL	UN

Project Title: BUSCONNECTS GALWAY - DUBLIN ROAD		Status: A1
Drawing Title: UTILITY DIVERSION - GAS NETWORKS IRELAND SHEET 6 OF 11		Rev: C01
Designed: WOT	Drawing No: B0004-R1-UT_LUG-22-BR-CU-00006	
Drawn: AC	Scale at A1: 1:500	
Approved: SOL	Date: OCT 2023	
Reviewed: JN		

File Name: R:\22 Projects\2007 - BusConnects Galway - Dublin Road\GEN00 Drawing\B06A81-UTL_UG-ZZ-DR-CU-00001_Utility Diversion - Gas Networks Ireland.dwg



Notes:

DO NOT SCALE, use figured dimensions only.

All levels are related to Ordnance Survey Datum, Mean Head.

This drawing is the property of Barry Transportation. It is a confidential document and must not be copied, used, or its contents divulged without prior written consent. This document should not be relied on or used in circumstances other than those for which it was originally prepared. Barry Transportation accepts no responsibility for this document to any other party other than the party by whom it was commissioned.

Rev.	Date	Drawn	Description	Chkd	Asmt
001	06/03/24	GP	BLUE FOR PLANNING	ROL	JA

Project Title: BUSCONNECTS GALWAY - DUBLIN ROAD		Status: A1
Drawing Title: UTILITY DIVERSION - GAS NETWORKS IRELAND SHEET 8 OF 11		Rev: C01
Designed: WOT	Drawing No: BCGDR-8TL-UTL_UG-ZZ-DR-CU-00008	Rev: C01
Drawn: AC	Scale at A1: 1:500	
Approved: SOL	Date: OCT 2023	
Reviewed: JH		

LEGEND:

EXISTING KERB LINE

GAS NETWORKS IRELAND - EXISTING MEDIUM PRESSURE GAS NETWORK

EXISTING NETWORK TO BE
DECOMMISSIONED

SITE BOUNDARY LINE

PROPOSED KERB LINE

GAS NETWORKS IRELAND -
PROPOSED DIVERSION

TEMPORARY LAND ACQUISITION

NOTES:

1. UTILITY LOCATIONS ARE INDICATIVE ONLY AND BASED ON UTILITY PROVIDER RECORDS.

Disclaimer:
© Galway City Council (GCC) 2023. This drawing is confidential and the copyright in it is owned by GCC. This drawing must not be either loaned, copied or otherwise reproduced in whole or in part or used for any purpose without the prior permission of GCC.

b. This drawing is to be used for the design element identified in the titlebox. Other information shown is to be considered indicative only. The drawing is to be read in conjunction with all other relevant design drawings.

c. O.S. data used for plans are printed under © **Taitte Éireann - Surveying**.
All rights reserved. Licence Number **CYAL50379860** © **Taitte Éireann - Surveying**.
All elevations are in metres and relate to OSi Geoid Model (OSGM15) Malin Head.
All Co-ordinates are in Irish Transverse Mercator Grid (ITM) as defined by OSi
active local GPS station

d. Information concerning the position of apparatus shown on this drawing is based on drawings supplied by the utility owners and/or the utility works contractor, whilst every care has been taken in the preparation of this drawing, positions should not be taken as approximate and are intended for general guidance only and no representation is made by the GCC as to the accuracy, completeness, sufficiency or otherwise of this drawing and the position of the apparatus. The information contained herein does not purport to be comprehensive or final as the apparatus is subject to being altered and/or superseded. Recipients should not rely on this information. Any liabilities are hereby expressly disclaimed.

e. The information contained herein has been provided by the GCC but does not purport to be comprehensive or final. Recipients should not rely on the information. Neither the GCC nor any of its directors, officers, employees, agents, stakeholders or advisers make any representation or warranty as to, or accept any liability or responsibility in relation to, the adequacy, accuracy, reasonableness or completeness of the information provided as part of this document or any matter on which the information is based (including but not limited to loss or damage arising as a result of reliance by recipients on the information or any part of it). Any liabilities are hereby expressly disclaimed.

ROAD (B338)

Area Under Construction

CYAL50379860
© Taite Éireann - Surveying



Tionscadal Éireann
Project Ireland
2040

**BUS
CONNECTS
GALWAY**
SUSTAINABLE TRANSPORT FOR A BETTER CITY



NTA
Údarás Náisiúnta Iompair
National Transport Authority



Notes:

DO NOT SCALE, use figured dimensions only.

All levels are referred to Ordnance Survey Datum, Malin Head.

This drawing is the property of Barry Transportation. It is a confidential document and must not be copied, used, or contents divulged without prior written consent. This document should not be relied on or used in circumstances other than those for which it was originally prepared. Barry Transportation accepts no responsibility for this document to any other party other than the party by whom it was commissioned.

[illegible]

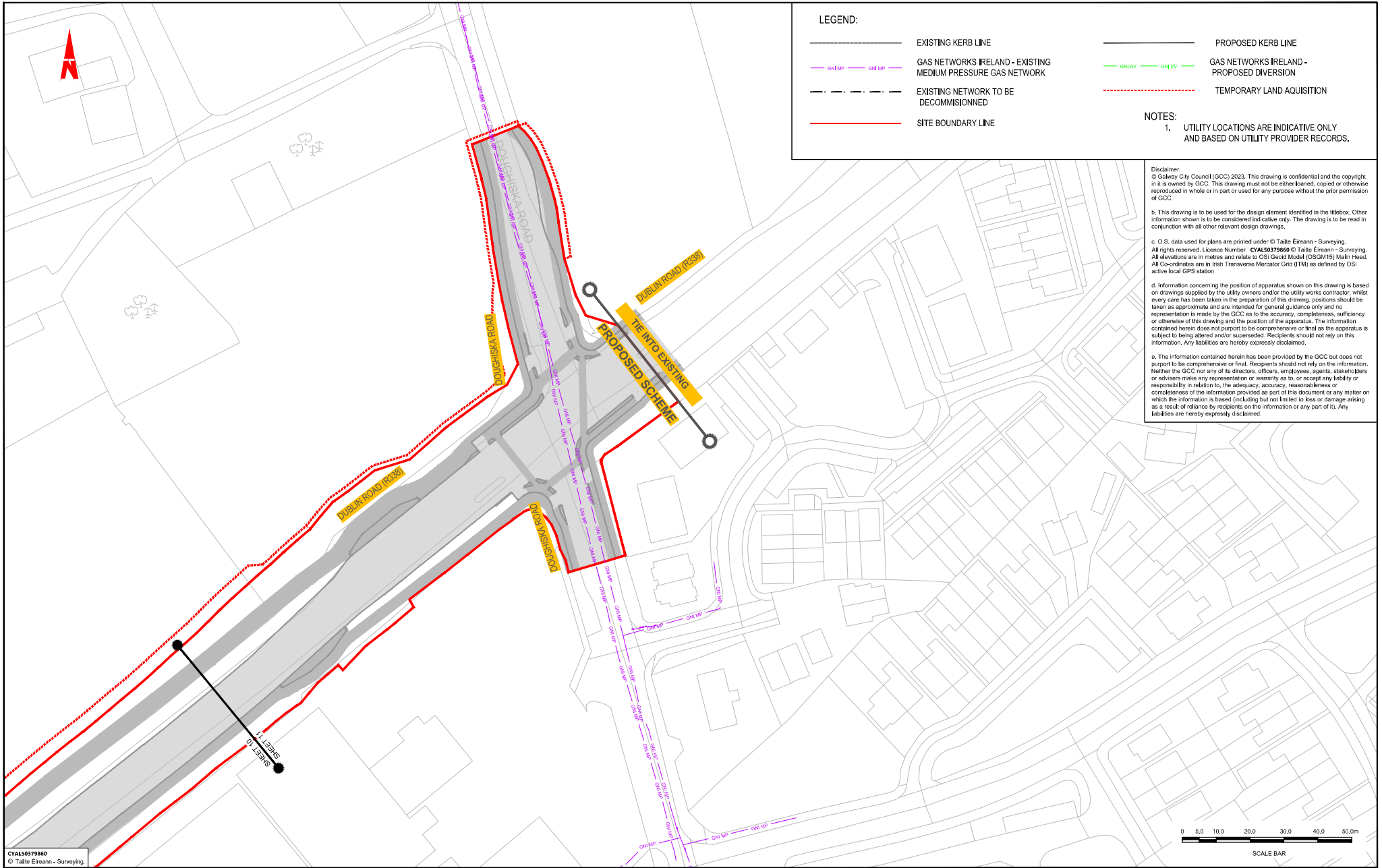
Project Title:	BUSCONNECTS GALWAY - DUBLIN ROAD
Drawing Title:	UTILITY DIVERSION - GAS NETWORKS IRELAND
	SHEET 10 OF 11

Designed: WOT	Drawing No. BCGDR-BTL-UTL_UG-ZZ-DR-CU-00010
Drawn: AC	
Approved: SOL	Scale at A1: 1:500
Reviewed: JN	Date: OCT 2023

Status:	A1
---------	----

Rev: C0

File Name: R:\22 Projects\207 - Bus Connects Galway - Dublin Road\GEN00 Drawing\B004R811-UTLUG-22-08-CU-0001-Utility Divisions - Gas Network Ireland.dwg



LEGEND:

- EXISTING KERB LINE

GAS NETWORKS IRELAND - EXISTING MEDIUM PRESSURE GAS NETWORK

EXISTING NETWORK TO BE DECOMMISSIONED

SITE BOUNDARY LINE
- PROPOSED KERB LINE
- GAS NETWORKS IRELAND - PROPOSED DIVERSION
- TEMPORARY LAND ACQUISITION

NOTES:
1. UTILITY LOCATIONS ARE INDICATIVE ONLY AND BASED ON UTILITY PROVIDER RECORDS.

Disclaimer:
© Galway City Council (GCC) 2023. This drawing is confidential and the copyright in it is owned by GCC. This drawing must not be either loaned, copied or otherwise reproduced in whole or in part or used for any purpose without the prior permission of GCC.

b. This drawing is to be used for the design element identified in the titlebox. Other information shown is to be considered indicative only. The drawing is to be read in conjunction with all other relevant design drawings.

c. O.S. data used for plans are printed under © Tallie Eireann - Surveying. All rights reserved. Licence Number **CYAL50379860** © Tallie Eireann - Surveying. All elevations are in metres and relate to OSI Geoid Model (OSGM15) Mean Head. All Co-ordinates are in Irish Transverse Mercator Grid (ITM) as defined by OSI active local GPS station.

d. Information concerning the position of apparatus shown on this drawing is based on drawings supplied by the utility owners and/or the utility works contractor, whilst every care has been taken in the preparation of this drawing, positions should be taken as approximate and are intended for general guidance only and no representation is made by the GCC as to the accuracy, completeness, sufficiency or otherwise of this drawing and the position of the apparatus. The information contained herein does not purport to be comprehensive or final as the apparatus is subject to being altered and/or superseded. Recipients should not rely on this information. Any liabilities are hereby expressly disclaimed.

e. The information contained herein has been provided by the GCC but does not purport to be comprehensive or final. Recipients should not rely on the information. Neither the GCC nor any of its directors, officers, employees, agents, stakeholders or advisers make any representation or warranty as to, or accept any liability or responsibility in relation to, the adequacy, accuracy, reasonableness or completeness of the information provided as part of this document or any matter on which the information is based (including but not limited to loss or damage arising as a result of reliance by recipients on the information or any part of it). Any liabilities are hereby expressly disclaimed.

CYAL50379860
© Tallie Eireann - Surveying.

Notes:
DO NOT SCALE, use figured dimensions only.
All levels are related to Ordnance Survey Datum, Mean Head.
This drawing is the property of Barry Transportation. It is a confidential document and must not be copied, used, or its contents divulged without prior written consent. This document should not be relied on or used in circumstances other than those for which it was originally prepared. Barry Transportation accepts no responsibility for the document to any other party other than the party by whom it was commissioned.

Rev.	Date	Drawn	Description	Chk'd	Asor'd
001	06/03/24	GMP	BUSL FOR PLANNING		

Project Title: BUSCONNECTS GALWAY - DUBLIN ROAD		Status: A1
Drawing Title: UTILITY DIVERSION - GAS NETWORKS IRELAND SHEET 11 OF 11		
Designed: WOT	Drawing No: B004R811-UTLUG-22-08-CU-00011	Rev: C01
Drawn: AC	Scale at A1: 1:500	
Approved: SOL	Date: OCT 2023	
Reviewed: JH		